



March 2017 Letting Report

K. Joe Carpenter, Jr., P.E.
Director of P3/Program Delivery

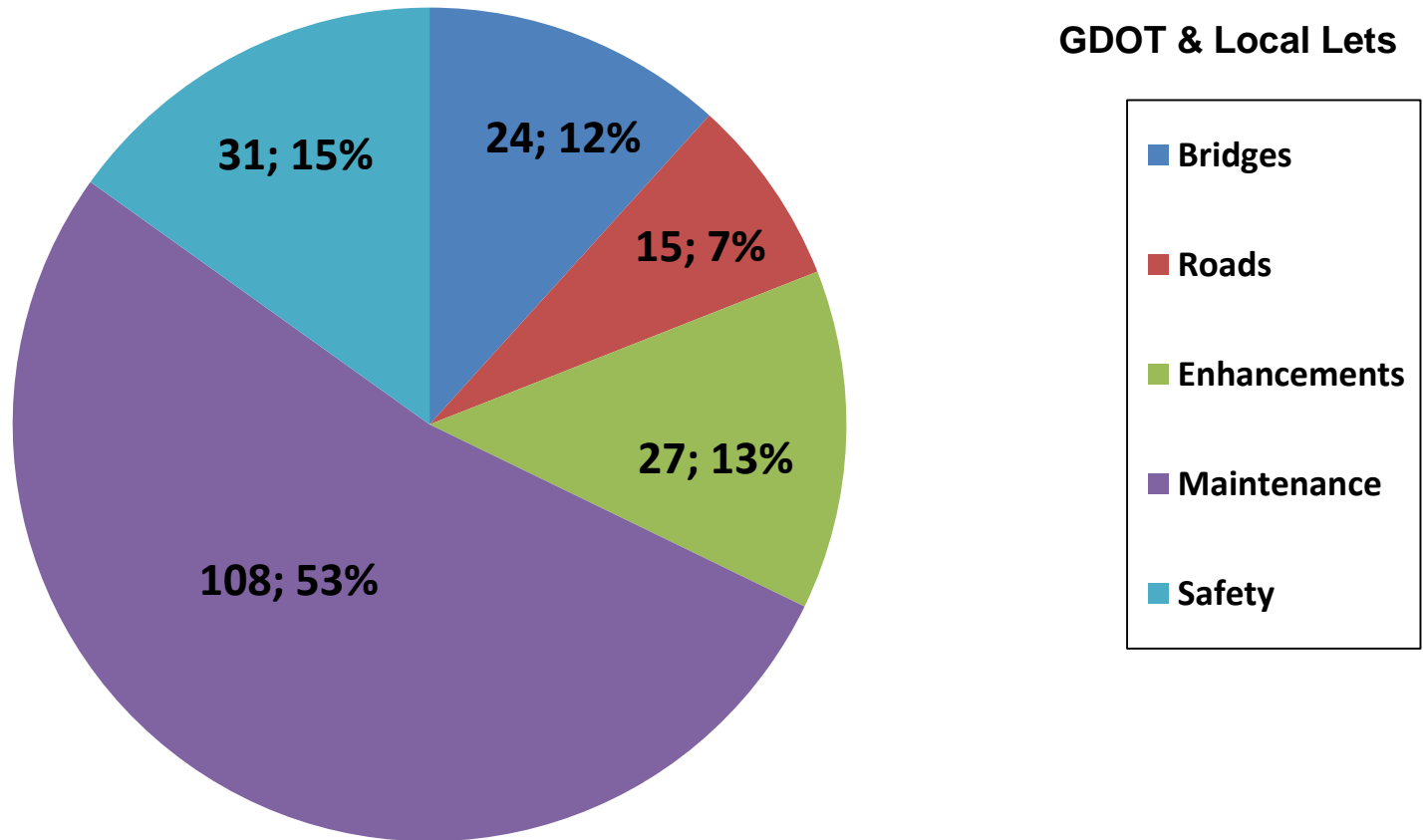
February 16, 2017



Fiscal Year 2017 Letting Report

Number of Projects Let in FY 2017

(Contractor Low Bid Award Data)



Total = 205

Does not include LMIG Projects

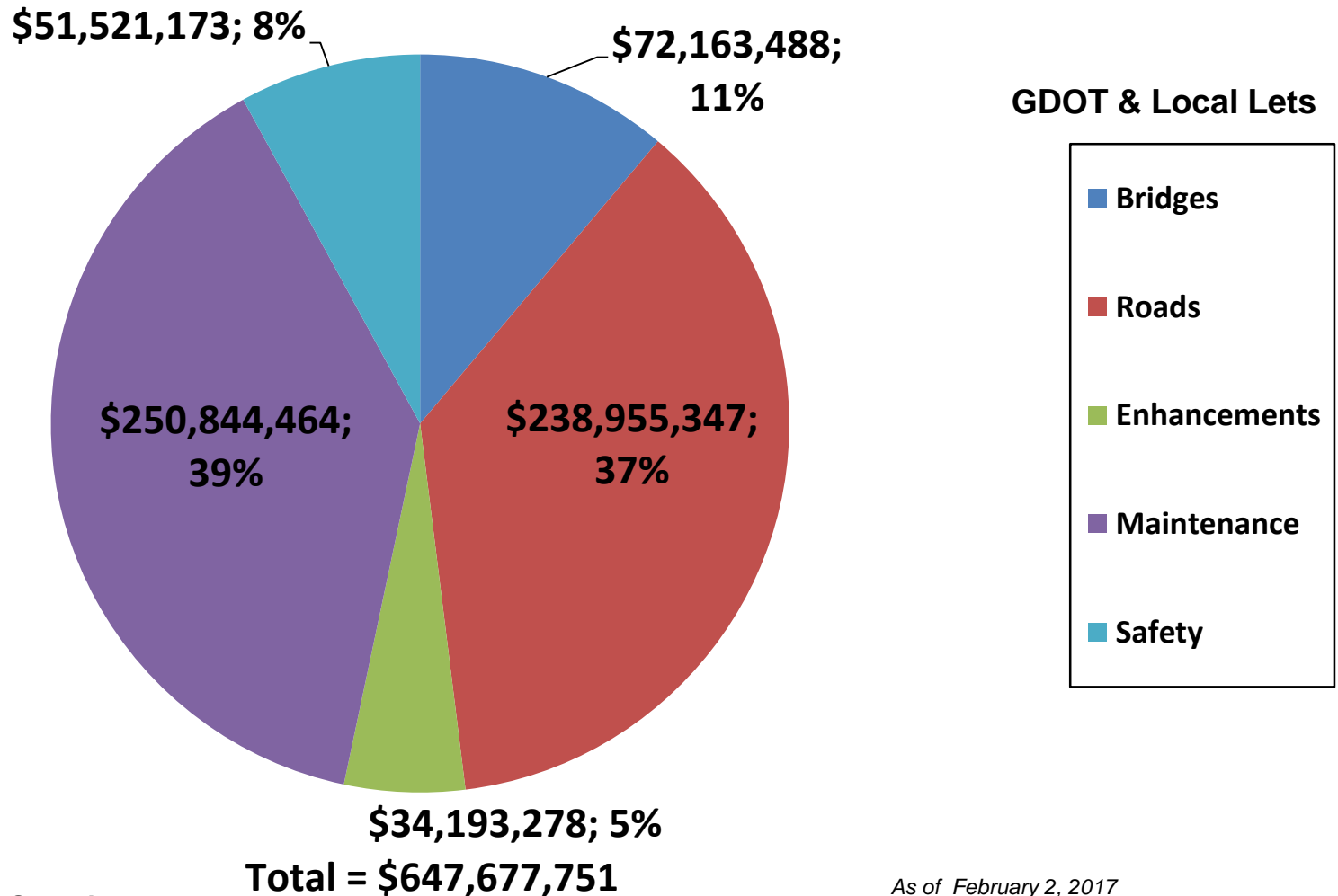
As of February 2, 2017
Source Construction Bidding Administration



Fiscal Year 2017 Letting Report

Dollar Amount of Projects Let in FY 2017

(Contractor Low Bid Award Data)



Does not include LMIG Projects

*As of February 2, 2017
Source Construction Bidding Administration*



January 2017 Letting Results

Summary	Presented to GDOT Board (Includes Adjustments)	Low Bid (Awarded to Contractor)	Low Bid w/Adjustments (Total Project Obligation)
GDOT Let (Project Count)	15	11	11
GDOT Let (Dollars)	\$171,453,272	\$102,399,070	\$117,138,755
Local Let (Project Count)	5	N/A Local Let	N/A Local Let
Local Let (Dollars)	\$7,295,027	N/A Local Let	N/A Local Let

*Low Bid Award Amount includes the Deferred and Awarded projects.
Does not include Engineering and Inspection, Utilities, Liquid AC, Incentives, LMIG and Rejected projects.



GDOT Let Projects

March 2017 Letting



GDOT Let Projects

March 2017 Letting

Project ID	Description	Primary County	Primary Work Type	Congressional District	Project Let By	Project Sponsor
M004995	I-16 EB & WB @ BLACK CREEK - SCOUR REPAIR	BRYAN	Bridges	001	DOT	GDOT
M005294	SR 94 FM LOWNDES COUNTY LINE TO E OF CR 157/CHURCH OF GOD ST	ECHOLS	Resurface & Maintenance	001	DOT	GDOT
M005540	I-95 FROM SOUTH NEWPORT RIVER/LIBERTY TO CSX #635042S/BRYAN	LIBERTY	Resurface & Maintenance	001	DOT	GDOT
M004801	SR 7 FROM FLORIDA STATE LINE TO NSR	LOWNDES	Resurface & Maintenance	001, 008	DOT	GDOT
M005555	MAINTENANCE PRESERVATION @ 3 LOCS IN DISTRICT 4 AREA 1	ECHOLS	Resurface & Maintenance	001, 008	DOT	GDOT
M005560	MAINTENANCE PRESERVATION @ 5 LOC IN DISTRICT 5 AREA 1; 2 & 4	APPLING	Resurface & Maintenance	001, 012	DOT	GDOT
0000481	SR 30/SR 90 FROM 4 LN @ I-75 TO MIDWAY RD IN CORDELE	CRISP	Widening	002	DOT	GDOT
0009117	WYNNTON ROAD MASTER PLAN - PHASE I	MUSCOGEE	TE-Landscape/Beautify	002	LOC	Columbus
0010597	SR 37; SR 45; CS 555/COURT ST & CS 560/WHITNEY ST @ 4 LOCS	CALHOUN	TE-Bike/Ped Facility	002	LOC	Morgan City
M005090	SR 26 FROM ELLAVILLE TO MACON COUNTY LINE	SCHLEY	Resurface & Maintenance	002	DOT	GDOT
M005188	SR 49 FM SUMTER COUNTY LINE TO N OF CS 577/N RANDOLPH STREET	MACON	Resurface & Maintenance	002	DOT	GDOT

****Note: Bridge Bond Project**



GDOT Let Projects

March 2017 Letting

Project ID	Description	Primary County	Primary Work Type	Congressional District	Project Let By	Project Sponsor
M005189	SR 41 FM N OF CS 532/INDUSTRIAL BLVD/MARION TO SR 22/TALBOT	MARION	Resurface & Maintenance	002	DOT	GDOT
M005191	SR 208 FROM HARRIS COUNTY LINE TO SR 41	TALBOT	Resurface & Maintenance	002	DOT	GDOT
M005269	SR 27 FM KINCHAFOONEE CRK/WEBSTER TO CR 368/CARTER ST/SUMTER	WEBSTER	Resurface & Maintenance	002	DOT	GDOT
M005290	SR 355 FROM SR 137 TO TALBOT COUNTY LINE	MARION	Resurface & Maintenance	002	DOT	GDOT
M005495	SR 45 FROM SR 1 TO EARLY COUNTY LINE	MILLER	Resurface & Maintenance	002	DOT	GDOT
M005557	MAINTENANCE PRESERVATION @ 5 LOCS IN DISTRICT 4 AREA 3	APPLING	Resurface & Maintenance	002	DOT	GDOT
M005558	MAINTENANCE PRESERVATION @ 2 LOCS IN DISTRICT 4 AREA 4	COLQUITT	Resurface & Maintenance	002, 008	DOT	GDOT
M004950	SR 92 FROM SR 85 TO FULTON COUNTY LINE	FAYETTE	Resurface & Maintenance	003, 013	DOT	GDOT
M005195	I-20 @ I-20 TURN AROUND BTWN LITHONIA IND BLVD&EVANS MILL RD	DEKALB	Bridges	004	DOT	GDOT
M004637	I-85 FROM I-75/I-85/BROOKWOOD/FULTON TO N OF SR 155/DEKALB	FULTON	Resurface & Maintenance	004, 005	DOT	GDOT
M005431	I-285 @ SOUTH UTOY CREEK - BRIDGE REHAB	FULTON	Bridges	005	DOT	GDOT

****Note: Bridge Bond Project**



GDOT Let Projects

March 2017 Letting

Project ID	Description	Primary County	Primary Work Type	Congressional District	Project Let By	Project Sponsor
0012631	PERIMETER ACTIVITY CENTER - ITS UPGRADES & SYSTEM EXPANSION	FULTON	ITS	006	LOC	Dunwoody
M005399	I-285 @ I-75 SB & NB RAMP IN COBB COUNTY - BRIDGE REHAB	COBB	Bridges	006, 011	DOT	GDOT
0010664	SR 13 FROM CR 634/LANGFORD ROAD TO CR 613/SIMPSON CIRCLE	GWINNETT	TE-Bike/Ped Facility	007	LOC	Gwinnett County
431120-	CR 160/EVERGREEN ROAD @ OCHLOCKONEE RIVER NE OF DOERUN	WORTH	Bridges	008	DOT	Worth County
M005013	SR 7BU FROM SR 7 TO SR 7	LOWNDES	Resurface & Maintenance	008	DOT	GDOT
M005043	SR 247 SPUR FROM SR 11 TO SR 247	HOUSTON	Resurface & Maintenance	008	DOT	GDOT
M005100	SR 7SB FROM SR 7BU TO SR 7BU	LOWNDES	Resurface & Maintenance	008	DOT	GDOT
M005205	SR 74 FROM SR 7/US 341 TO BIBB COUNTY LINE	MONROE	Resurface & Maintenance	008	DOT	GDOT
M005277	SR 112 FROM SR 107 TO SR 90	TURNER	Resurface & Maintenance	008	DOT	GDOT
M005556	MAINTENANCE PRESERVATION @ 5 LOCS IN DISTRICT 4 AREA 2	WILCOX	Resurface & Maintenance	008	DOT	GDOT
M004964	SR 13 FROM CR 630/CANTRELL ROAD TO SR 369	HALL	Resurface & Maintenance	009	DOT	GDOT

****Note: Bridge Bond Project**



GDOT Let Projects

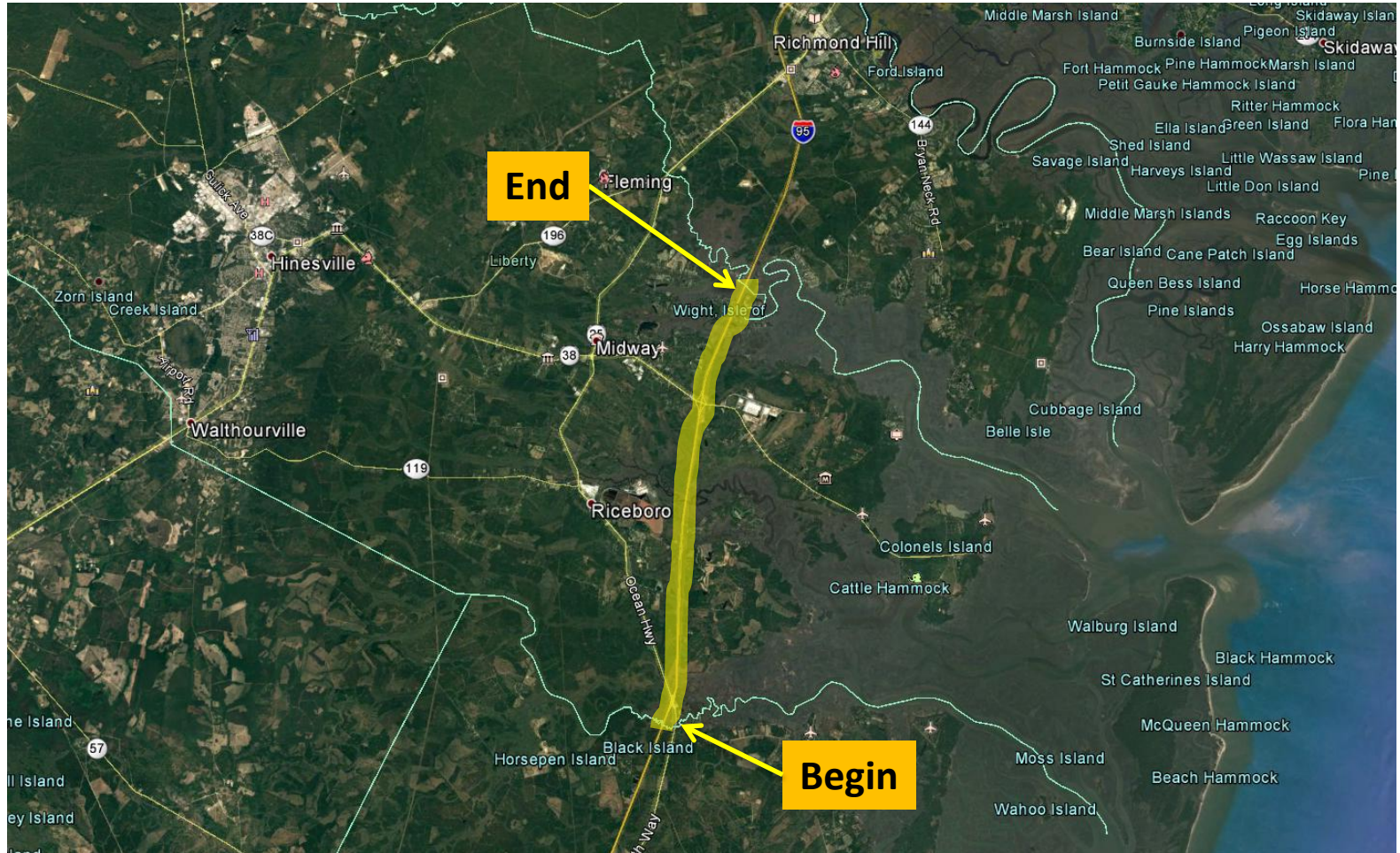
March 2017 Letting

Project ID	Description	Primary County	Primary Work Type	Congressional District	Project Let By	Project Sponsor
M005016	SR 8 FROM SR 51 TO E OF CR 33/ELIZABETH ROAD	HART	Resurface & Maintenance	009	DOT	GDOT
M005031	SR 11 FROM SR 283 TO WHITE COUNTY LINE	HALL	Resurface & Maintenance	009	DOT	GDOT
M005485	SR 60 FROM CS 577/HOLLY DRIVE TO CR 1013/FRASER CIRCLE	HALL	Resurface & Maintenance	009	DOT	GDOT
0010719	SR 15 FROM CR 79/COURT STREET TO SR 16	HANCOCK	TE-Bike/Ped Facility	010	LOC	Sparta
M005067	SR 15 FROM CS 524/3RD AVE TO SR 24/SR 88	WASHINGTON	Resurface & Maintenance	010	DOT	GDOT
M005549	MAINTENANCE PRESERVATION @ 2 LOCS IN DISTRICT 2 AREA 4 & 5	NEWTON	Resurface & Maintenance	010	DOT	GDOT
0010718	SWAINSBORO DOWNTOWN STREETScape IMPROVEMENTS @ 5 LOCS	EMANUEL	TE-Bike/Ped Facility	012	LOC	Swainsboro
M005548	MAINTENANCE PRESERVATION @ 3 LOCS IN DISTRICT 2 AREA 3	BURKE	Resurface & Maintenance	012	DOT	GDOT
0009035	DOUGLASVILLE LIGHTING & BANNERS - PHASE II	DOUGLAS	TE-Bike/Ped Facility	013	LOC	Douglasville
621530-	SR 151 FM S OF ROLLINS IND PARK/HOLCOMB RD TO SR 2/US 41	CATOOSA	Widening	014	DOT	GDOT
M005497	SR 301 FROM ALABAMA STATE LINE TO ALABAMA STATE LINE	DADE	Resurface & Maintenance	014	DOT	GDOT

****Note: Bridge Bond Project**



I-95 FROM SOUTH NEWPORT RIVER/LIBERTY TO CSX #635042S/BRYAN Resurfacing Project in Liberty County Congressional District 1



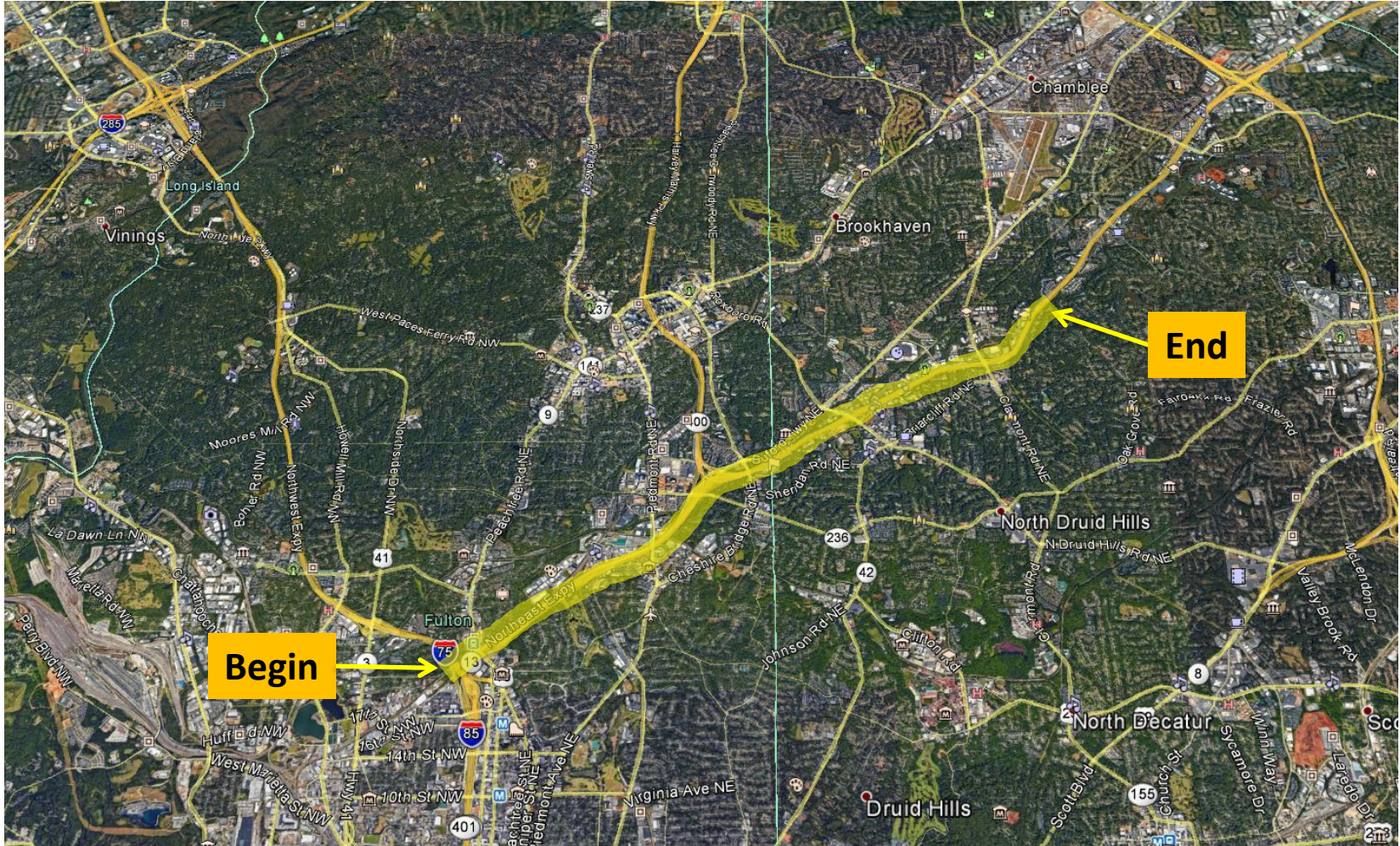


SR 30/SR 90 FROM 4 LN @ I-75 TO MIDWAY RD IN CORDELE Widening Project in Crisp County Congressional District 2





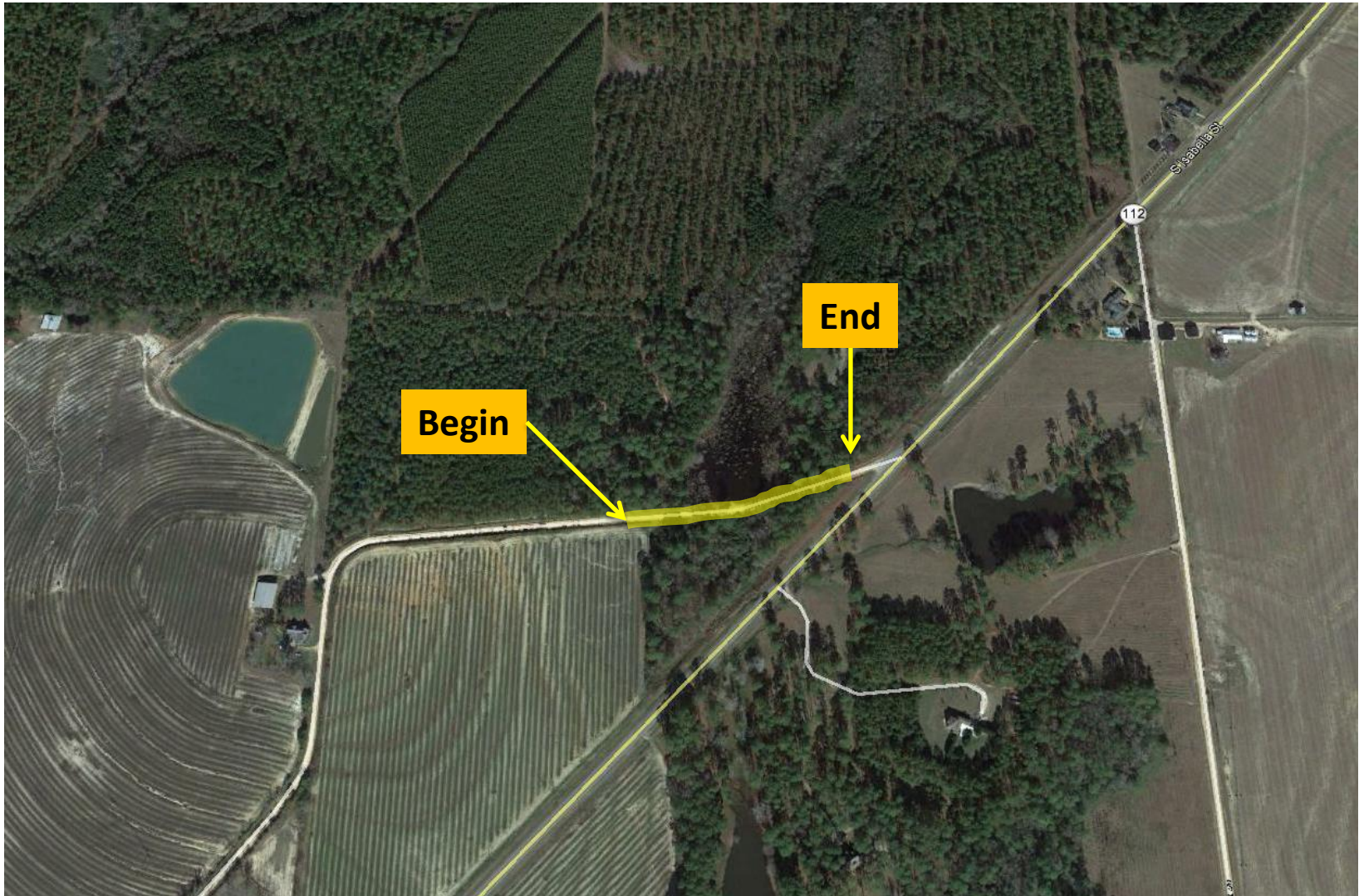
I-85 FROM I-75/I-85/BROOKWOOD/FULTON TO N OF SR 155/DEKALB Resurfacing Project in Fulton County Congressional Districts 4 and 5



CR 160/EVERGREEN ROAD @ OCHLOCKONEE RIVER NE OF DOERUN

Bridge Replacement Project in Worth County

Congressional District 8





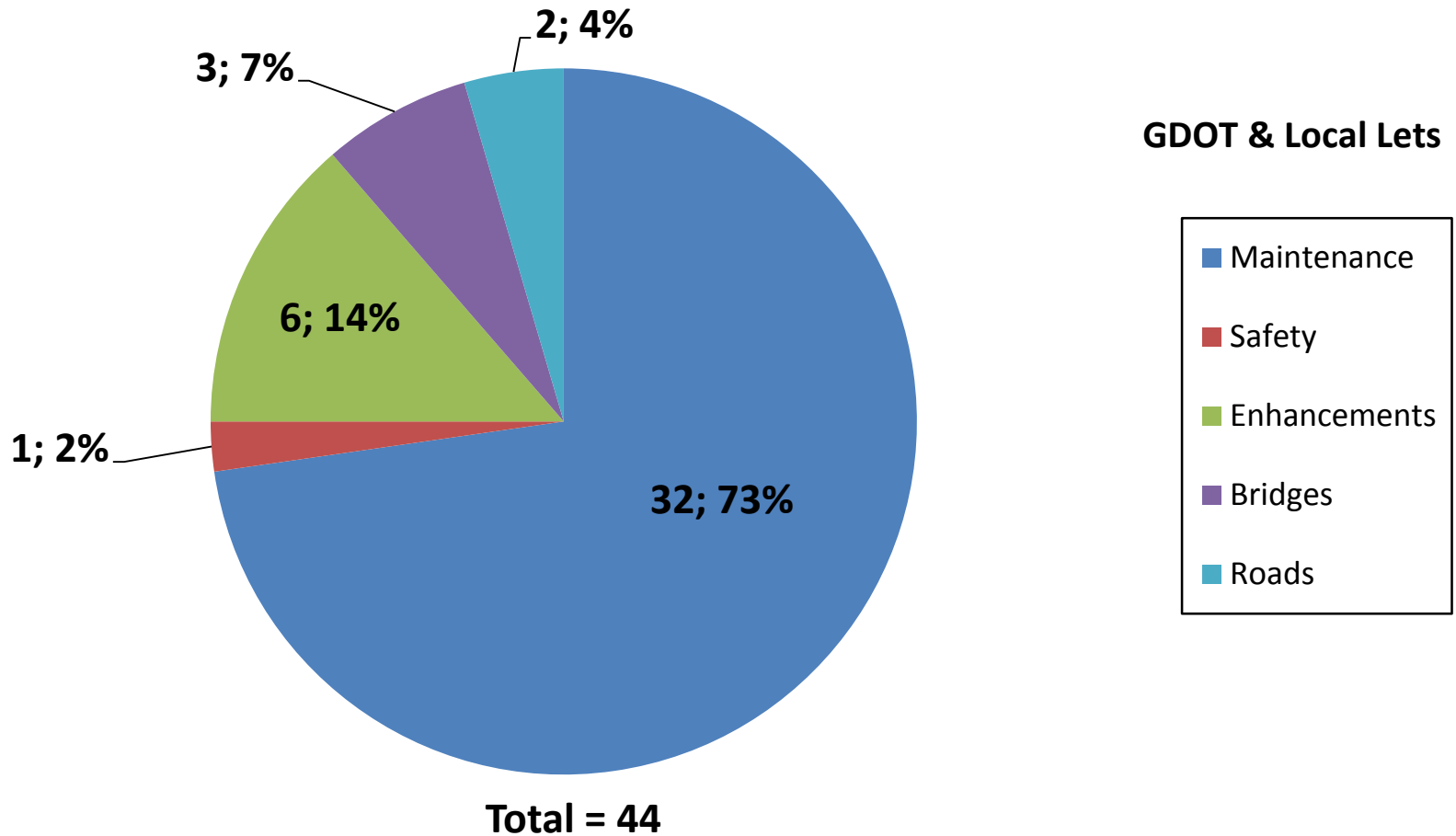
SR 151 FM S OF ROLLINS IND PARK/HOLCOMB RD TO SR 2/US 41 Widening Project in Catoosa County Congressional District 14





Fiscal Year 2017 Letting Report

Number of Projects March 2017 Letting



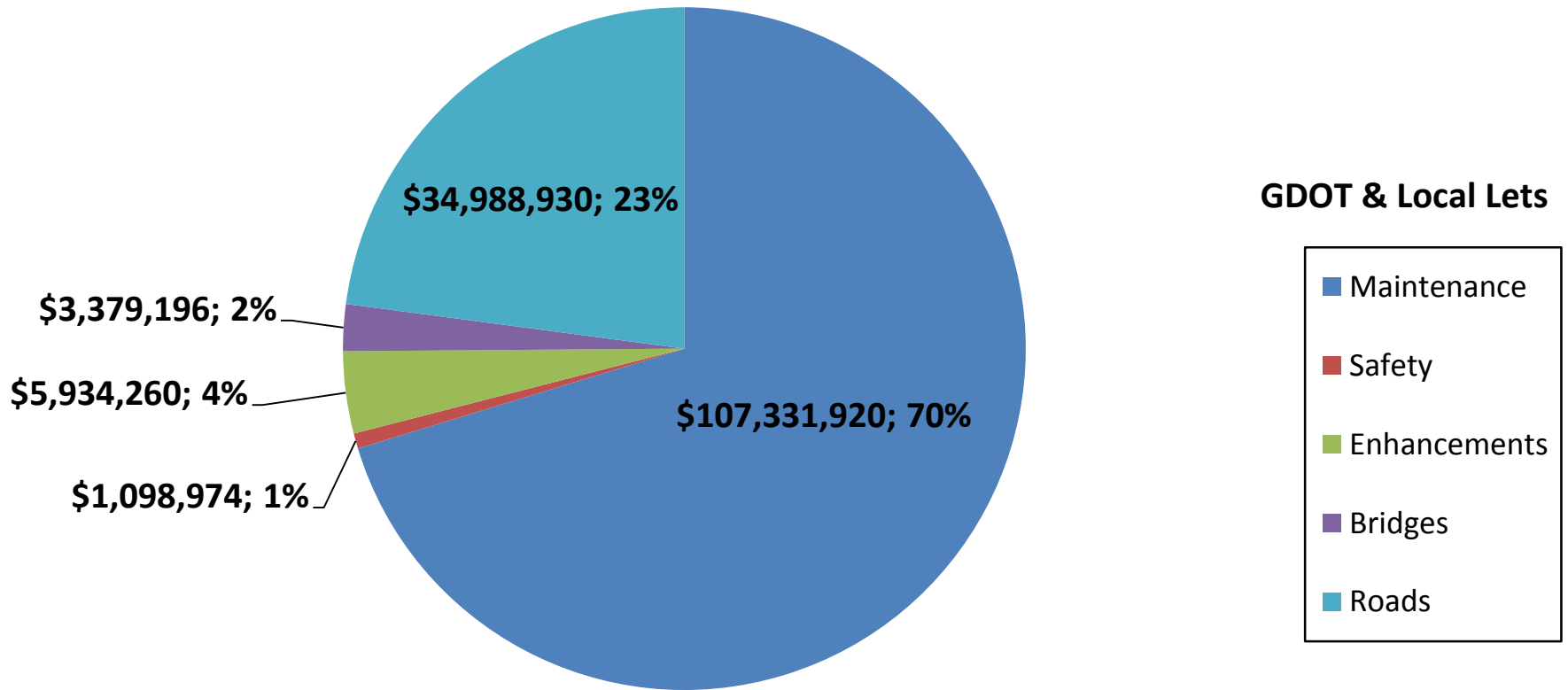
Does not include LMIG Projects

*As of February 10, 2017
Source TPro – Chief Approved FY '17 Letting List*



Fiscal Year 2017 Letting Report

Dollar Amount of Projects March 2017 Letting



Total = \$152,733,281

Does not include LMIG Projects

*As of February 10, 2017
Source TPro – Chief Approved FY '17 Letting List*



Proposed Revisions To The Construction Work Program

**Jay Roberts
Director of Planning**

February 16, 2017



February 2017 CWP Revision

Board Revisions:

1. P.I. No. 006048, Cobb County, I-285 at SR 280
Interchange Reconstruction in Congressional Districts 11 and 13

Action: Deletion from the Program



March 2017 CWP Revision

Board Revisions:

1. P.I. No. 0015536, Brantley County, SR 520/US 82 at Satilla River Overflow 14 miles E of Hoboken Bridge Replacement in Congressional District 1

Action: Addition to the Program

2. P.I. No. 0015540, Crisp County, SR 7/US 41 at Cedar Creek 1.5 miles S of Cordele Bridge Replacement in Congressional District 2

Action: Addition to the Program

3. P.I. No. 0015559, Muscogee County, SR 520/US 280 at Chattahoochee River in Columbus Bridge Replacement in Congressional District 2

Action: Addition to the Program

4. P.I. No. 0015563, Randolph County, SR 41 at Barge Creek 12 miles NE of Cuthbert Bridge Replacement in Congressional District 2

Action: Addition to the Program

5. P.I. No. 0015566, Talbot County, SR 190 at NS #718623W 2.5 miles W of Manchester Bridge Replacement in Congressional District 2

Action: Addition to the Program



March 2017 CWP Revision

Board Revisions:

6. P.I. No. 0015565, Talbot County, SR 22 at Richland Creek 6.7 miles E of Talbotton Bridge Replacement in Congressional District 2

Action: Addition to the Program

7. P.I. No. 0015564, Talbot County, SR 22 at South Fork Upatoi Creek 1 mile E of Geneva Bridge Replacement in Congressional District 2

Action: Addition to the Program

8. P.I. No. 0015537, Carroll County, SR 1/US 27 at Little Tallapoosa River in Carrollton Bridge Replacement in Congressional District 3

Action: Addition to the Program

9. P.I. No. 0015558, Meriwether County, SR 41 at Coleman Creek 4 miles S of Luthersville Bridge Replacement in Congressional District 3

Action: Addition to the Program

10. P.I. No. 0015560, Newton County, SR 81 at the Yellow River in Porterdale Bridge Replacement in Congressional District 4

Action: Addition to the Program



March 2017 CWP Revision

Board Revisions:

11. P.I. No. 0015546, Fulton County, SR 14 at NS #718047H in Atlanta
Bridge Replacement in Congressional District 5

Action: Addition to the Program

12. P.I. No. 0015553, Houston County, SR 7/SR 127/US 41 at Big Indian Creek in Perry
Bridge Replacement in Congressional District 8

Action: Addition to the Program

13. P.I. No. 0015552, Houston County, SR 7 at Flat Creek 3.5 miles SW of Perry
Bridge Replacement in Congressional District 8

Action: Addition to the Program

14. P.I. No. 0015533, Banks County, SR 59 at the Hudson River 6 miles SE of Homer
Bridge Replacement in Congressional District 9

Action: Addition to the Program

15. P.I. No. 0015532, Banks County, SR 51 at the Hudson River in Homer
Bridge Replacement in Congressional District 9

Action: Addition to the Program



March 2017 CWP Revision

Board Revisions:

16. P.I. No. 0015543, Elbert County, SR 77 at Coldwater Creek 9.5 miles N of Elberton Bridge Replacement in Congressional District 9

Action: Addition to the Program

17. P.I. No. 0015547, Gilmer County, SR 515/US 76 at Big Turniptown Creek in Ellijay Bridge Replacement in Congressional District 9

Action: Addition to the Program

18. P.I. No. 0015551, Hall County, SR 60 at the Chattahoochee River in Gainesville Bridge Replacement in Congressional District 9

Action: Addition to the Program

19. P.I. No. 0015556, Lumpkin County, SR 9/US 19 at the Chestatee River 10.25 miles NE of Dahlonega Bridge Replacement in Congressional District 9

Action: Addition to the Program

20. P.I. No. 0015557, Madison County, SR 8/SR 174 at the Hudson River 8.8 miles N of Danielsville Bridge Replacement in Congressional District 9

Action: Addition to the Program



March 2017 CWP Revision

Board Revisions:

21. P.I. No. 0015562, Rabun County, SR 28 at the Big Creek 13 miles NE of Clayton
Bridge Replacement in Congressional District 9

Action: Addition to the Program

22. P.I. No. 0015567, Union County, SR 60 at Suches Creek 13.1 miles SW of Blairsville
Bridge Replacement in Congressional District 9

Action: Addition to the Program

23. P.I. No. 0015554, Jefferson County, SR 78 at Williamson Swamp Creek
Bridge Replacement in Congressional District 10

Action: Addition to the Program

24. P.I. No. 0015555, Lincoln County, SR 79 at the Broad River 15.7 miles NW of Lincolnton
Bridge Replacement in Congressional District 10

Action: Addition to the Program

25. P.I. No. 0015568, Walton County, SR 83 at Polecat Creek 1 mile NW of Good Hope
Bridge Replacement in Congressional District 10

Action: Addition to the Program



March 2017 CWP Revision

Board Revisions:

26. P.I. No. 0015534, Bartow County, SR 3/US 41 NB at SR 293 in Emerson Bridge Replacement in Congressional District 11

Action: Addition to the Program

27. P.I. No. 0015535, Bartow County, SR 3/US 41 at SR 293/CS #340429D in Emerson Bridge Replacement in Congressional District 11

Action: Addition to the Program

28. P.I. No. 0015538, Catoosa County, SR 3 at Peavine Creek 3.7 miles E of Ft. Oglethorpe Bridge Replacement in Congressional District 14

Action: Addition to the Program

29. P.I. No. 0015539, Chattooga County, SR 48 at Raccoon Creek 3 miles W of Summerville Bridge Replacement in Congressional District 14

Action: Addition to the Program

30. P.I. No. 0015542, Dade County, SR 136 at Lookout Creek Bridge Replacement in Congressional District 14

Action: Addition to the Program



March 2017 CWP Revision

Board Revisions:

31. P.I. No. 0015541, Dade County, SR 58 at Squirrel Town Creek 4 miles NE of Trenton Bridge Replacement in Congressional District 14

Action: Addition to the Program

32. P.I. No. 0015544, Floyd County, SR 293 at Dykes Creek 5.4 miles NE of Rome Bridge Replacement in Congressional District 14

Action: Addition to the Program

33. P.I. No. 0015561, Polk County, SR 101 at Euharlee Creek Tributary in Rockmart Bridge Replacement in Congressional District 14

Action: Addition to the Program